

FUJIFILM

User's Manual

Instant Print Software

SF-PM

User's Manual

SF-PM Ver.6.0



First Edition

PP3-B1346E

Dear Customers

Thank you for purchasing FUJIFILM Instant Print Software SF-PM (hereinafter called "SF-PM").

SF-PM will provide the easy way of beautiful image-printing through FUJIFILM ASK Printers. SF-PM can handle pictures taken by digital-cameras and images saved in memory cards.

- When you introduce SF-MP400 and SF-PM at the same time, please refer to "SF-MP400 Usage Notes". In that case, this book is not necessary.

- This product consists of an installation CD (1) and the accompanying Usage Notes (this document).
- Important: Read these Usage Notes before opening the package containing the CD.
You must read this End User License Agreement before opening the CD package provided by FUJIFILM Corporation. You may use the software contained on the CD only if you agree with the terms of the End User License Agreement.
Opening the CD package will be taken as constituting your agreement to the terms of the End User License Agreement.
- For detailed information on how to use this product, refer to the user manuals listed below, which are provided on the installation CD.

(1) ".¥Manual : SF-PM User's Guide (includes the setup procedure)
¥Manual_en.pdf"

Contents

Dear Customers	2
Contents.....	3
End User License Agreement	4
1. Contents of package.....	5
2. System Components	5
1-1. the Printer Color Correction Tool.....	7
1-1-1. Outline of this tool	7
1-1-2. System diagram.....	7
3. How to setup SF-PM.....	8
3-1 Hardware and software requirements.....	8
3-2 Checking the Windows Components.....	9
3-3 How to install SF-PM.....	10
3-3-1 The connection of the printer and SF-PM Software.....	10
3-3-2 Setting the printer ID during and Print Condition Setup.....	19
3-3-3 Installing the Printer Color Correction Tool	22
3-4 Setting the printer ID manually.....	24
4. How to use Print Condition Setup	25
4-1 How to start Print Condition Setup.....	25
4-2 How to use Print Condition Setup.....	27
4-2-1 About Print Folder	27
4-2-2 Details of items to be configured and the methods of setting these items	27
4-3 How to save settings and exit	31
5. How to use Print Manager	32
5-1 How to start Print Manager	32
5-2 How to use the main window of Print Manager.....	33
5-3 How to use Color Correction Tool.....	36
5-3-1 Select target printer	36
5-3-2 Test Print function	37
5-3-3 Save LUT.....	41
5-3-4 Through test.....	41
5-4 When an error is detected on the printers.....	42
6. How to uninstall SF-PM.....	43
7. How to UnInstall Color Correction Tool	45
8. Pixel size list for each print size.....	46

- Microsoft and Windows are trademarks of the Microsoft Corporation of the U.S. registered in the U.S. and other countries. Windows is an abbreviated term referring to the Microsoft Windows Operating System.
- Pentium is the trademark of the Intel Corporation of U.S. registered in the U.S. and other countries.
- All other company or product names are trademarks or registered trademarks of the respective companies.

End User License Agreement

This End User License Agreement ("Agreement") is an agreement between FUJIFILM Corporation and you, which sets forth the terms and conditions of the license granted for you to use the software provided by FUJIFILM.

The CD contains third party software. In case a separate agreement is provided by a third party supplier for its software, the provisions of such separate agreement shall apply to the use of such third party software, prevailing over those of this Agreement.

1. Definitions.
 - (a) "Media" means the CD titled "FUJIFILM Instant Print Software SF-PM" which is provided to you together with this Agreement.
 - (b) "Software" means the software which is recorded on Media.
 - (c) "Documentation" means the operation manuals of Software and other related written materials which are provided to you together with Media.
 - (d) "Product" means Media (including Software) and Documentation collectively.
2. Use of Software.

FUJIFILM grants to you a nontransferable, nonexclusive license:

 - (a) to install one copy of Software onto one computer in binary machine executable form;
 - (b) to use Software on the computer onto which Software is installed; and
 - (c) to make one backup copy of Software.
3. Restrictions.
 - (a) You shall not distribute, rent, lease or otherwise transfer all or any part of Software, Media or Documentation to any third party without FUJIFILM's prior written consent. You also shall not sublicense, assign or otherwise transfer all or any part of the rights granted to you by FUJIFILM under this Agreement without FUJIFILM's prior written consent.
 - (b) Except as expressly granted by FUJIFILM hereunder, you shall not copy or reproduce all or any part of Software or Documentation.
 - (c) You shall not modify, adapt or translate Software or Documentation. You also shall not alter or remove copyright and other proprietary notices that appear on or in Software or Documentation.
 - (d) You shall not, or shall not have any third party, reverse-engineer, decompile, or disassemble Software.
4. Ownership.

All copyrights and other proprietary rights to Software and Documentation are owned and retained by FUJIFILM or the third party suppliers as indicated on or in Software or Documentation. Nothing contained herein shall be construed, expressly or implicitly, as transferring or granting any right, license, or title to you other than those explicitly granted under this Agreement.
5. Limited Warranty.

FUJIFILM warrants to you that Media is free from any defect in material and workmanship under normal use for ninety (90) days from the date of your receipt of Media. Should Media not meet the foregoing warranty, FUJIFILM shall replace such defective Media with other Media bearing no defect. FUJIFILM's entire liability and your sole and exclusive remedy with regard to any defect in Media shall be expressly limited to such FUJIFILM's replacement of Media as provided herein.
6. Disclaimer of warranty.

Except as provided in section 5 herein, FUJIFILM provides product "As is" and without warranties of any kind, express or implied. FUJIFILM shall make no warranty, express, implied or statutory, as to any other matters, including, but not limited to non-infringement of any copyright, patent, trade secret, or any other proprietary rights of any third party, merchantability, or fitness for any particular purpose.

7. Limitation of liability.

In no event shall FUJIFILM have any liability for any general, special, direct, indirect, consequential, incidental, or other damages (including damages for loss of profits or lost savings) incurred from the use of or inability to use product even if FUJIFILM has been advised of the possibility of such damages.
8. No export.

You acknowledge that neither Software nor any part thereof, will be transferred or exported to any country or used in any manner in violation of any export control laws and regulations to which Software is subject.
9. Termination.

In case you breach any of the terms and conditions hereof, FUJIFILM may immediately terminate this Agreement without any notice.
10. Term.

This Agreement is effective until the date when you cease to use Software, unless earlier terminated in accordance with Section 9 hereof.
11. Obligation upon termination.

Upon termination or expiration of this Agreement, you shall, at your own responsibility and expense, delete or destroy immediately all Software (including its copies), Media and Documentation.
12. Governing Law.

This Agreement shall be governed by and construed in accordance with laws of Japan.

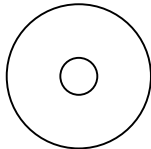
Do not attempt to play the CD enclosed with this product on an audio CD player.
Doing so could damage your hearing or could damage your speakers or headphones.

Please note that this Guide is written on the assumption that you already have basic understanding of how to use your PC (personal computer) and Windows.
For basic information on using your PC and Windows, refer to the respective manuals supplied with your PC

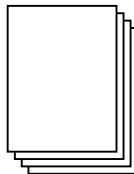
1. Contents of package

SF-PM package consists of :

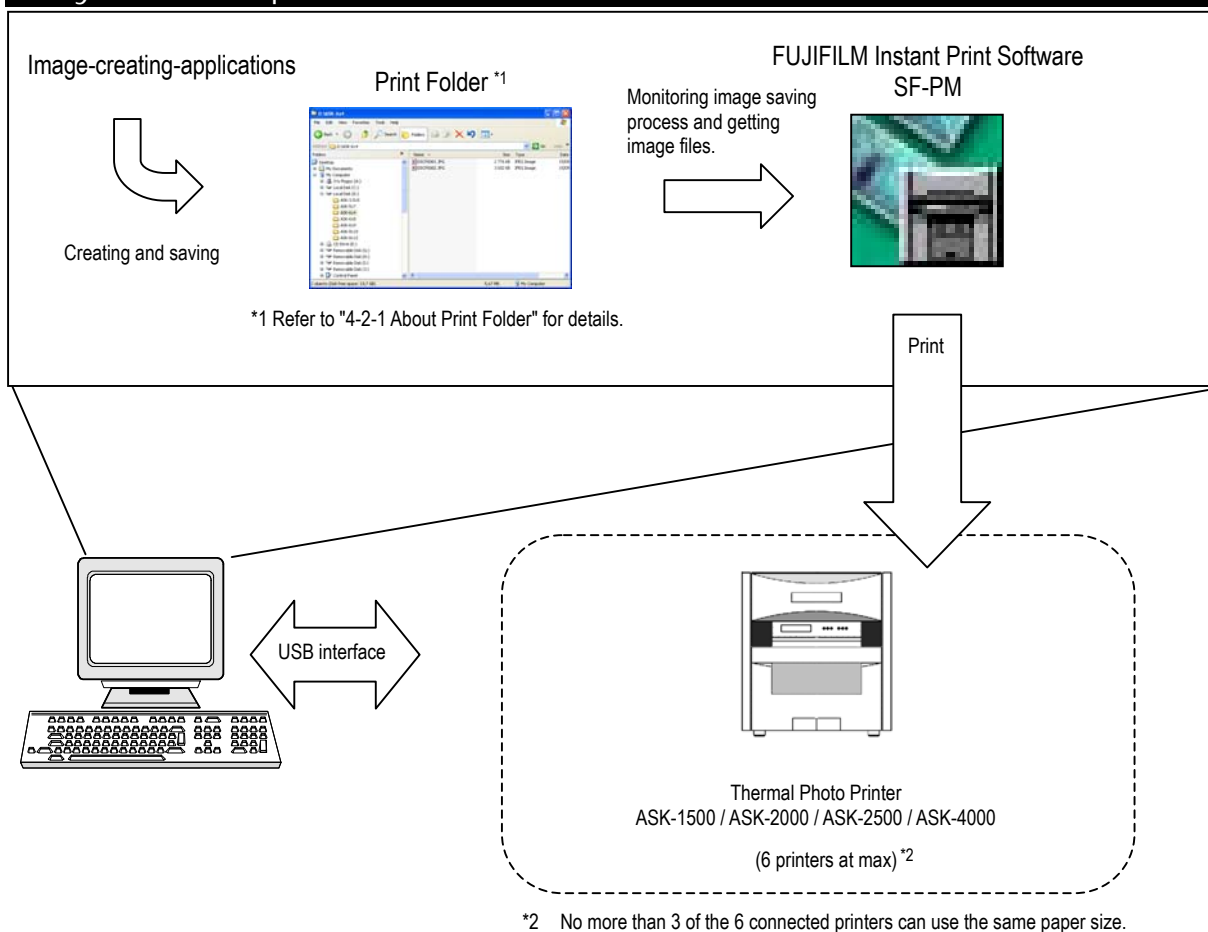
*Installation CD (1 disk)



*Notes (This Manual)



2. System Components



[Note]

- ◆ Note that successful operation is not guaranteed when ASK-1500" and "ASK-2000" and "ASK-2500" printers are connected and used at the same time.

- Since SF-PM does not create any images, SF-PM needs to get images from other applications. This manual describes how to use SF-PM only. So, it is recommended to refer to manuals for image-creating-applications either.
- SF-PM supports following image formats. : JFIF (JPG), TIFF (TIF), Exif JPEG (JPG), Exif TIFF (TIF), 24-bit Windows Bitmap (BMP) [letters inside "(")" indicates file extensions for each format.]

Hereinafter,

- " ASK-1500 " means ASK-1500 printers.
- " ASK-2000 " means ASK-2000 printers.
- " ASK-2500 " means ASK-2500 printers.
- " ASK-4000 " means ASK-4000 printers.

The modules that make up SF-PM can be broadly divided into "ASK Print Manager", "ASK Print Condition Setup", "ASK Printer ID Setup" and "ASK Printer Color Correction Tool". In this manual, these are referred to hereafter as follows:

- " Print Manager " means ASK Print Manager.
- " Print Condition Setup " means ASK Print Condition Setup.
- " Printer ID Setup " means ASK Printer ID Setup.
- " Printer Color Correction Tool " means ASK Printer Color Correction Tool.

1-1. the Printer Color Correction Tool

1-1-1. Outline of this tool

After Install this tool, the following functions are to make an addition.

- ◆ The function of the color correction for each ASK printer.

The Color Correction Tool will provide to create LUT (Look-up Table) for correcting the color difference among multiple units of printers connected.

This tool has the printing function for test with the LUT value.

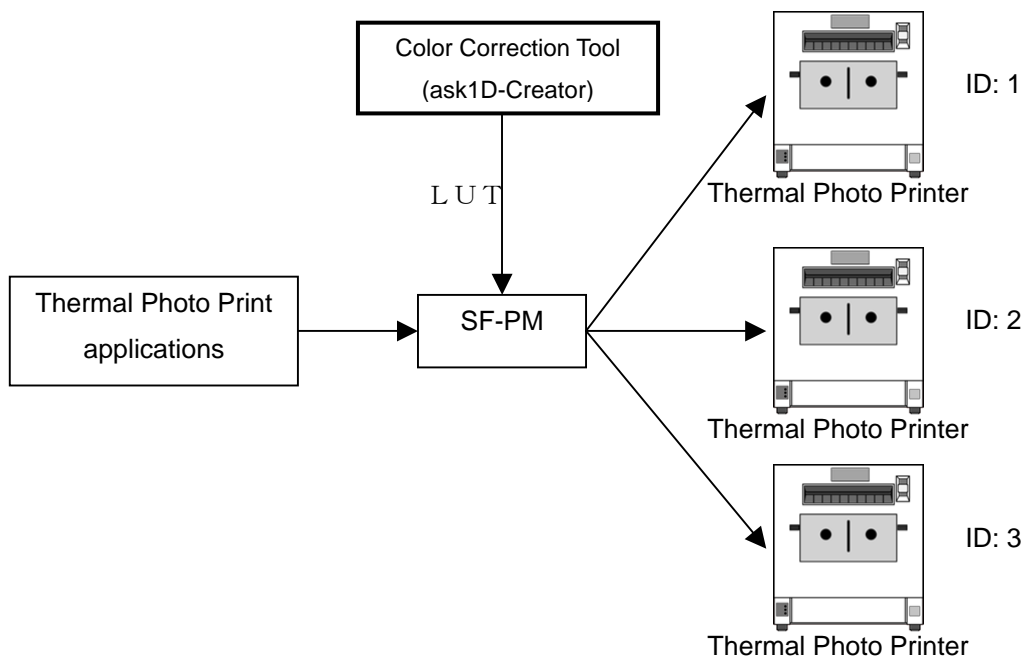
When decide correction value, it can be saved in SF-PM folder.

1-1-2. System diagram

It (below diagram) shows the Thermal Photo Print System with multiple units of printers.

In the following case, 3 printers are connected simultaneously.

Note: Maximum connection of printers is 6.



3. How to setup SF-PM

Follow the steps described below to prepare for using SF-PM.

3-1 Hardware and software requirements

SF-PM requires following hardware and software.

PC	IBM PC/AT compatible
OS	Microsoft Windows 2000 Professional Microsoft Windows XP Home Edition Microsoft Windows XP Professional Microsoft Windows Vista 32bit Business
CPU	Pentium 4 - 2.0GHz or faster
RAM	128MB or more
HDD free space	20GB or more
Display	SVGA (800*600) or higher
Devices	Keyboard, mouse, CD drive
USB 2.0 interface	built-in to the PC as standard equipment (needed to connect the ASK-1500,ASK-2000,ASK-2500 and ASK-4000 series printers described below)
Printer	FUJIFILM Thermal Photo Printer ASK-1500,ASK-2000,ASK-2500,ASK-4000

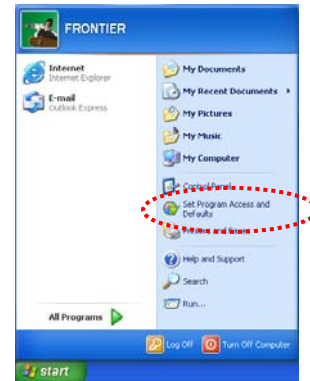
3-2 Checking the Windows Components

In the case of Windows Vista, procedures 1-4 are disuse. Please advance to "3-3 How to install SF-PM".

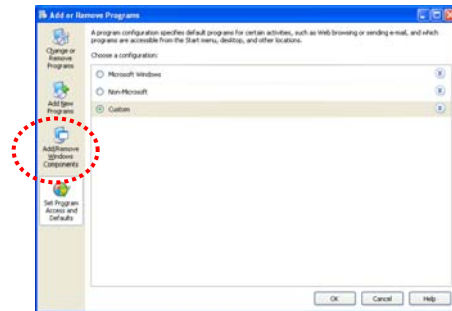
To run SF-PM optimally, some of the service settings for Windows components must be changed. Use the procedure below to check whether the services are being used, and change the setting if they are.

1. Click the [Start] button and then click "Set Program Access and Defaults".

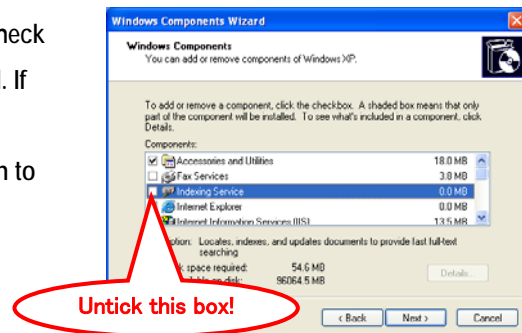
(The example shows the Windows XP screen.)



2. When the "Add or Remove Programs" window appears, click "Add / Remove Windows Components".



3. When the "Windows Components Wizard" appears, check whether the checkbox for "Indexing Service" is ticked. If so, untick the box and then click the [Next] button. (If the checkbox is not ticked, click the [Cancel] button to exit.)



4. The Windows component settings are changed and the wizard completion window appears. Click the [Finish] button to exit.

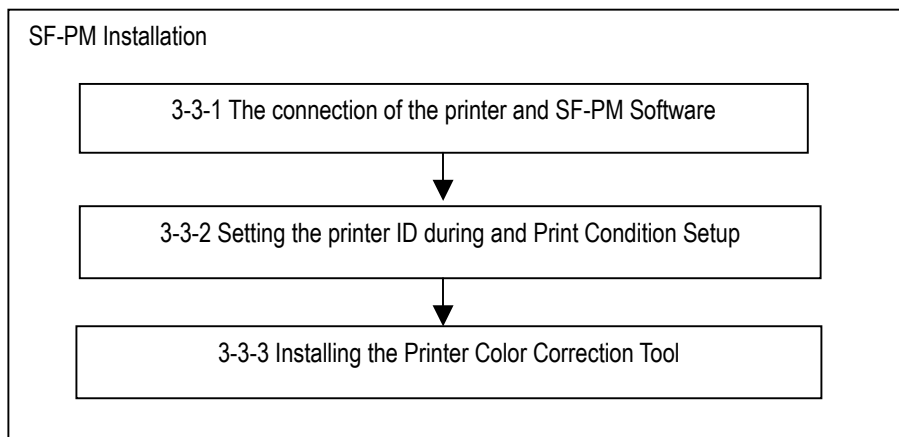


3-3 How to install SF-PM

Follow the steps described below to install SF-PM.

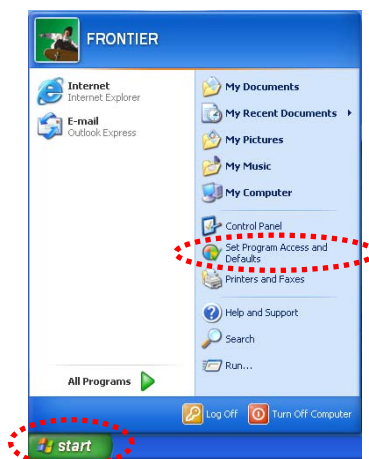
- It is necessary to logon to the PC with the user account of "Computer administrator" type. Refer to Windows' manual for details about account type.
- Quit all applications before starting the installation of SF-PM.
- Do not turn on the printer until instructed later in the procedure.

Installation flow

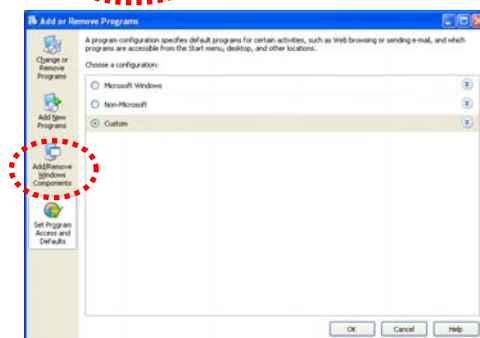


3-3-1 The connection of the printer and SF-PM Software

1. Click the [Start] button and then click "Set Program Access and Defaults".
(The example shows the Windows XP screen.)

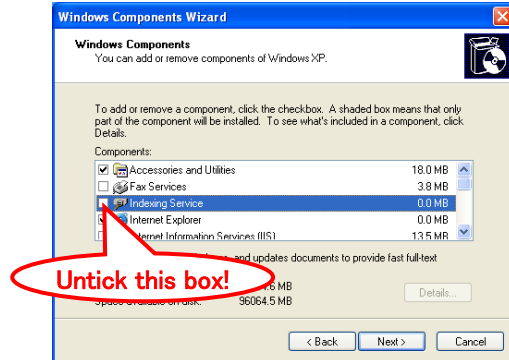


2. When the "Add or Remove Programs" window appears, click "Add / Remove Windows Components".



3. When the "Windows Components Wizard" appears, check whether the checkbox for "Indexing Service" is ticked. If so, untick the box and then click the [Next] button.

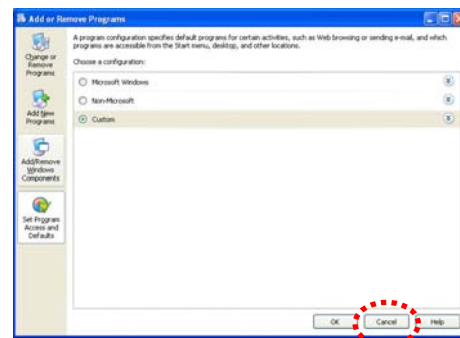
(If the checkbox is not ticked, click the [Cancel] button to exit.)



4. The Windows component settings are changed and the wizard completion window appears. Click the [Finish] button to exit.



5. Click the [Cancel] button to exit.

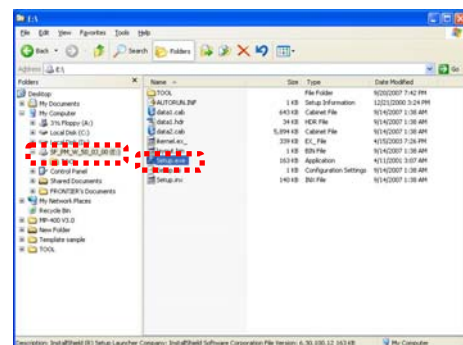


6. Insert the FUJIFILM Instant Print Software SF-PM Installer CD-ROM into the computer's CD-drive. After you insert the CD, the installer starts up automatically.

*If using Windows Vista, click "Run SETUP.EXE" in the window shown at the right.

When the "User Account Control" window appears, click the [Allow] button.

[Windows Vista]

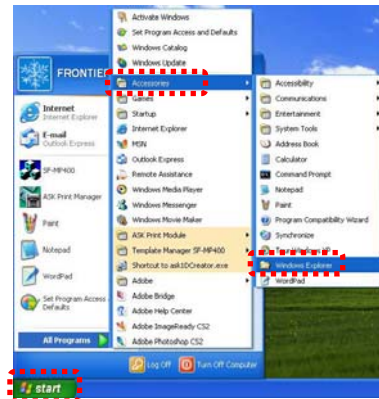


If the installer does not start up, open Windows Explorer, and double-click "Setup.exe" on the SF-PM Installer CD.

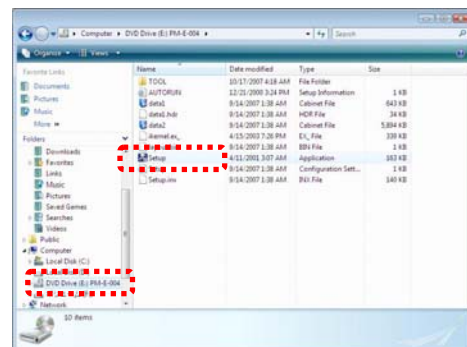
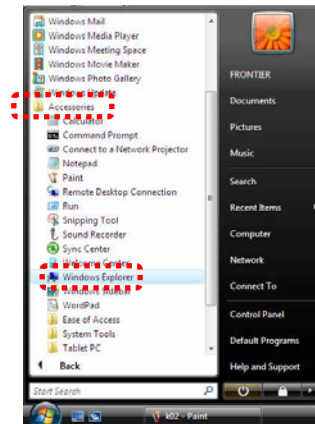
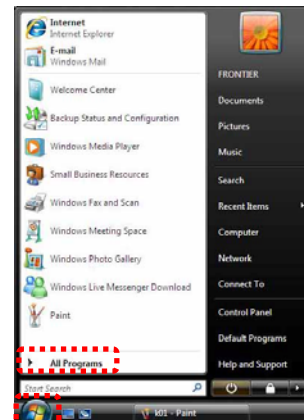
To start Explorer ...

*Click the [start] button, then click the [All Programs],
[accessories], [Explorer].

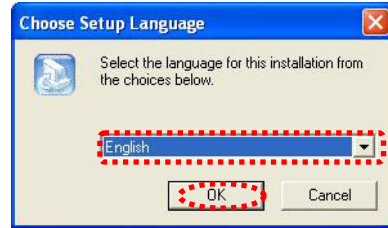
Double-click the "Setup.exe".



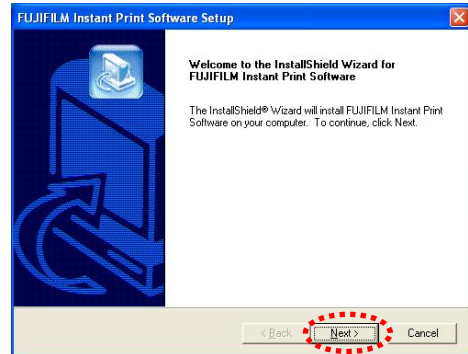
[Windows Vista]



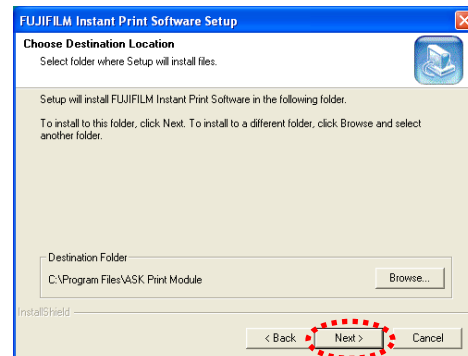
7. The window for selecting the language used in the installation program appears.
Select the desired language in the combo box and click the [OK] button.



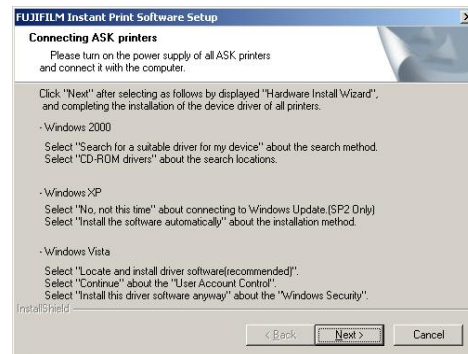
8. Window shown at right will appear.
Click the [Next] button to exit.
Install SF-PM by following the instructions in the InstallShield Wizard window.



9. Window shown at right will appear. Click the [Next] button.
(Destination folder for installation can be changed in this window. However, in most cases, there's no need to change the destination folder. If changing, click the [Browse...] button to select the folder and click the [Next] button.)



10. When the ASK printer connection window appears, connect the "ASK-1500" or "ASK-2000" or "ASK-2500" or "ASK-4000" printer to one of the computer's USB ports.



11. Turn on the connected printer (ASK-1500, ASK-2000, ASK-2500 or ASK-4000).
12. When Windows recognizes the printer, the "Found New Hardware" wizard starts up.
Install the ASK printer drivers by following the instructions in the wizard windows.

【Windows 2000 Professional】

1. When the "Found New Hardware Wizard" window opens, click the [Next] button.
2. When the "Install Hardware Device Drivers" window opens, select [Search for a suitable driver for my device]

(recommended)" and then click the [Next] button.

3. When the "Locate Driver Files" window appears, check that the [CD-ROM drives] option is ticked and then click the [Next] button

4. When "FUJIFILM ASK-1500", "FUJIFILM ASK-2000", "FUJIFILM ASK-2500" or "FUJIFILM ASK-4000" is retrieved in the "Driver Files Search Results", click the [Next] button.

5. When the "Completing the Found New Hardware Wizard" message appears, click the [Finish] button.

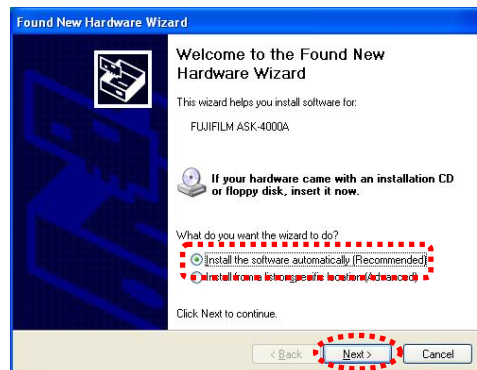
【Windows XP】

1. Wait until the "Found New Hardware Wizard" window appears.

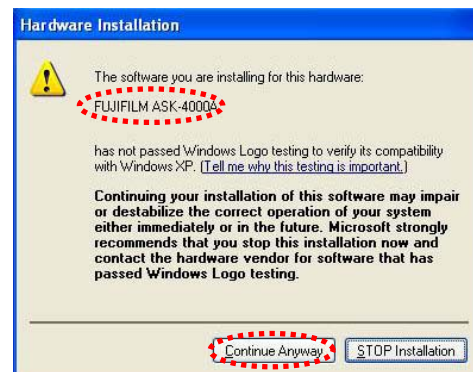
Windows then connects to the Windows Update website and you are asked to confirm software updating. Select "No, not this time" and click the [Next] button. (This window appears when Windows XP Service Pack 2 is installed.)

Click the [Next] button to exit.

2. Select "Install the software automatically (Recommended)" and then click the [Next] button.



3. The "Hardware Installation" message appears, but the software can be installed safely, so click the [Continue Anyway] button.

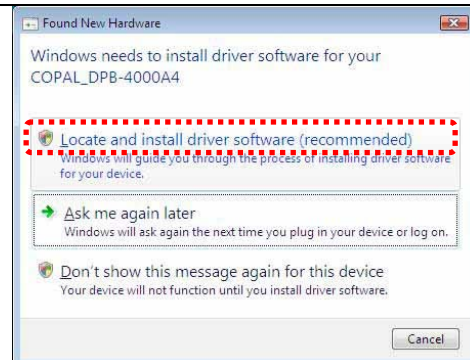


4. When the "Found New Hardware Wizard" message appears, click the [Finish] button.



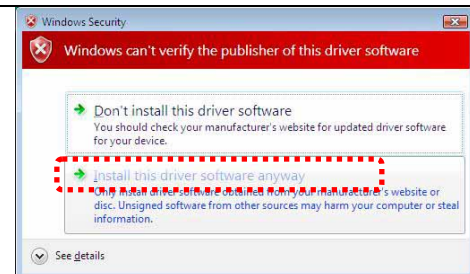
【Windows Vista】

1. Wait until the "Found New Hardware" window appears. Click "Locate and install driver software (recommended)".



2. Click the [Continue] button in the "User Account Control" window that appears.

3. Click "Install this driver software anyway" in the window shown at the right appeared.



13. Confirm that a printer was connected definitely.

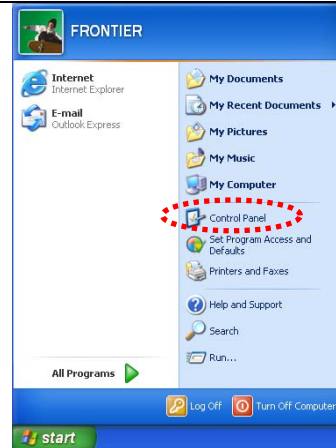
【Windows 2000 Professional】

1. Open the [Start] menu.
2. Select "Settings" → "Control Panel".
3. Double-click the "System" icon.
4. Click the "Hardware" tab and then the [Device Manager] button.
5. Double-click "Universal Serial Bus controllers".
6. Check that "FUJIFILM ASK-1500", "FUJIFILM ASK-2000", "FUJIFILM ASK-2500" or "FUJIFILM ASK-4000" is displayed.

If confirmation is over, please finish device manager. This completes the printer connection procedure.

【Windows XP】

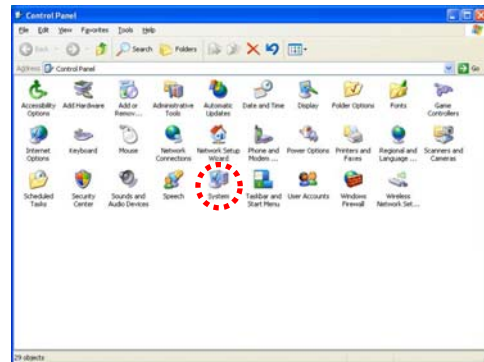
1. Open the [start] menu, and then open "Control Panel".



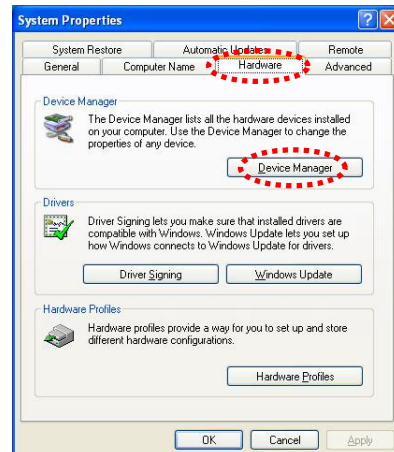
2. Click "Performance and maintenance".

(If the "System" icon is displayed directly in "Control Panel", proceed to step 3.)

3. Double-click "System".



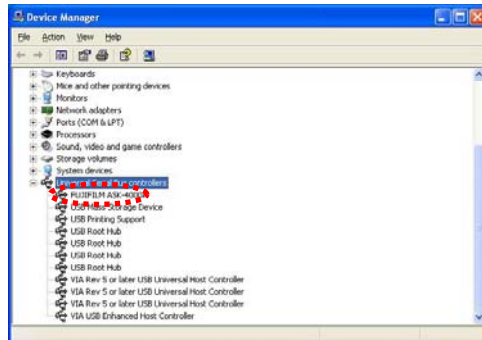
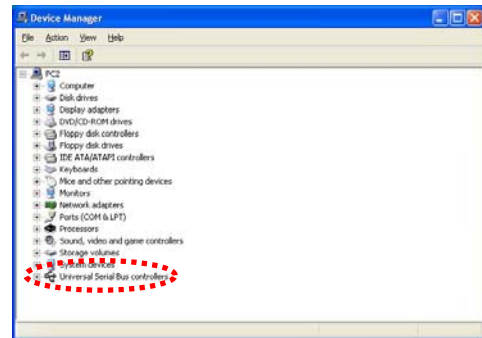
4. Click the "Hardware" tab and then the [Device Manager] button.



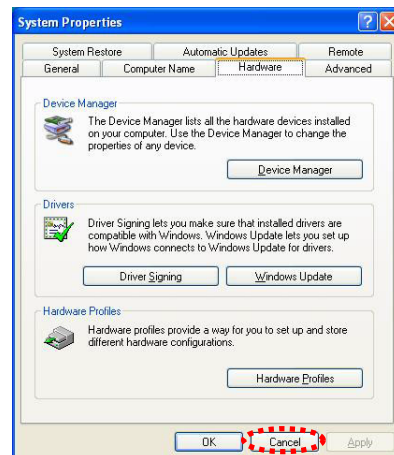
5. Double-click "Universal Serial Bus controllers".

Check that "FUJIFILM ASK-1500", "FUJIFILM ASK-2000", "FUJIFILM ASK-2500" or "FUJIFILM ASK-4000" is displayed.

After the confirmation, exit the [Device Manager].



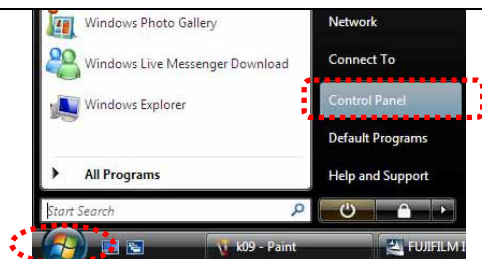
This completes the printer connection procedure.



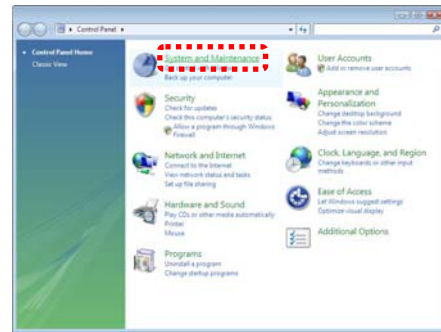
Click the [Cancel] button to exit.

【Windows Vista】

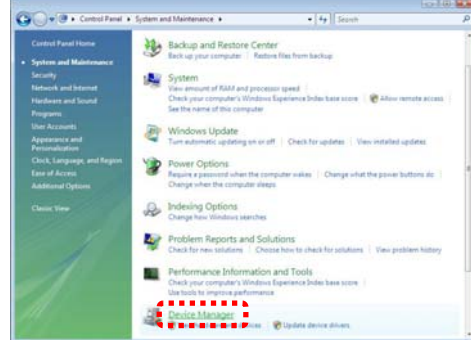
1. Choose [Control Panel] among an [start] menu.



2. Click the [System and Maintenance].



3. Click the [Device Manager].



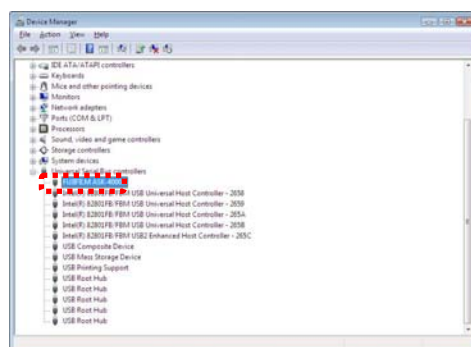
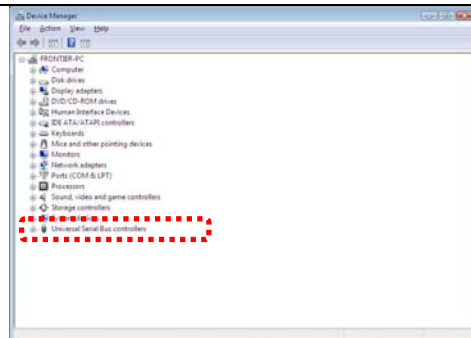
4. Click the [Continue] button in the "User Account Control" window that appears.

5. Double-click "Universal Serial Bus controllers".

Check that "FUJIFILM ASK-1500", "FUJIFILM ASK-2000", "FUJIFILM ASK-2500" or "FUJIFILM ASK-4000" is displayed.

Finish device manager.

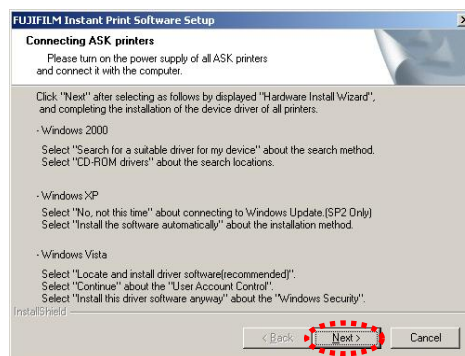
Finish Control Panel.



3-3-2 Setting the printer ID during and Print Condition Setup

So that the printer runs correctly with SF-PM, different printer ID numbers must be set for each of the connected printers in "Printer ID Setup".

1. When driver installation is finished, click the [Next] button in the ASK printer connection window.



2. **Printer ID setting**
IDs for connected printers are set automatically. Wait a few moments until setting is completed.
(This may take between 10 and 90 seconds depending on the number of printers connected.)



3. When automatic printer ID setting ends, the window shown on the right appears. Click the [Exit] button. Normally, there is no need to change these settings. Click the [Exit] button.

- When the "Printer ID Setup" window opens, ID numbers between 1 and 6 are automatically assigned in sequence to the connected printers.



Attention

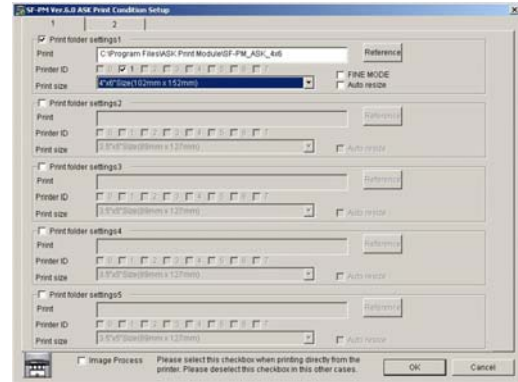
- ◆ When this window is displayed, make a note of the serial numbers and ID numbers of the respective printers. This will serve as a guide as to which printers the IDs selected in the "Print Condition Setup" window are assigned to.
- ◆ The automatically assigned ID numbers can be changed manually. To do this, change the printer ID on the screen to a number between 0 and 7 and then click the [Change] button.
- ◆ If you change the ID manually, take care not to assign duplicate ID numbers to multiple printers.
- ◆ [Change] button saves the printer ID settings. However, note that relaunching "ASK Print Condition Setup" from the program menu automatically sets the IDs again.

4. The print parameter setting window in the "ASK Print Condition Setup" then opens. Please confirm "4-2 How to use Print Condition Setup" to the setting method for print folders.

When print size, printers are different from the setting of your wish, please refer to "4-2-2 Details of items to be configured and the methods of setting these items", and change setting.

Click [OK] button to save settings and quit Print Condition Setup. When settings are properly saved, the Print Condition Setup will be closed.

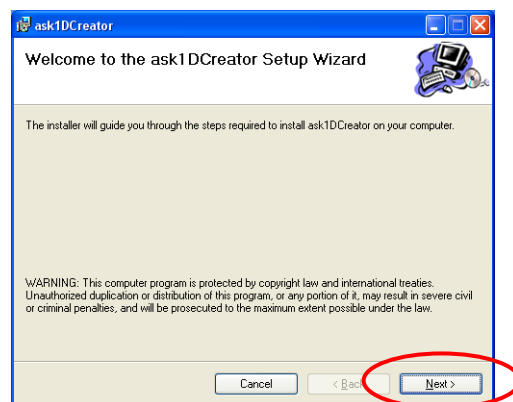
When you use plural printers and plural print size, please set from [Print Folder Settings 2] to [Print Folder Settings 10].



3-3-3 Installing the Printer Color Correction Tool

1. It will appear on the left screen after launched installer.

Click "Next" button.

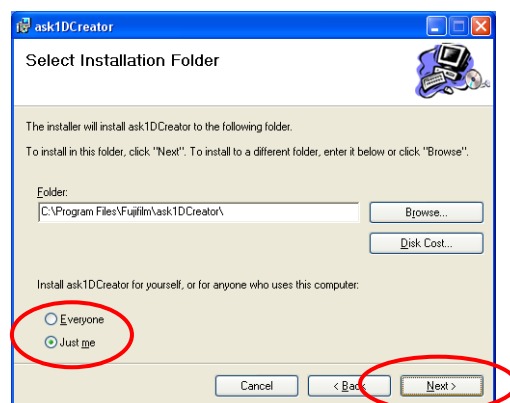


2. Please confirm installation folder, and select user.

If the current login user of windows operating system is "FRONTIER", select "Just me".

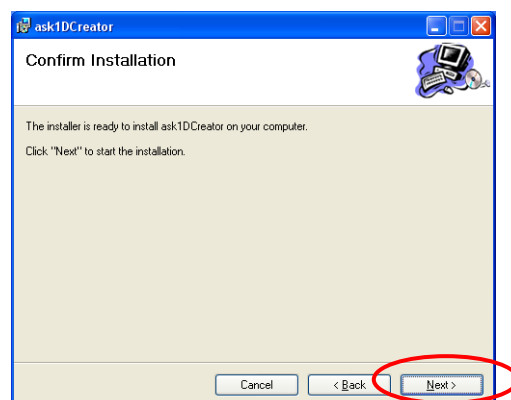
Otherwise select "Everyone".

Click "Next" button.



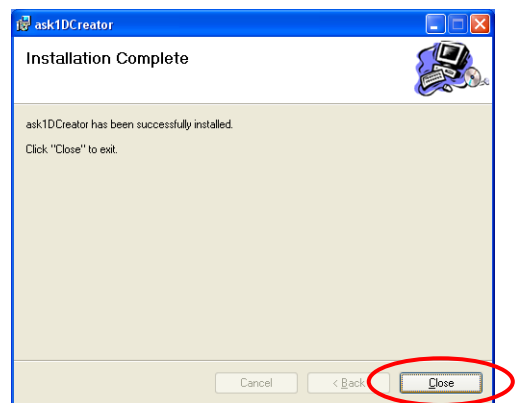
3. Please confirm installation.

Click "Next" button.

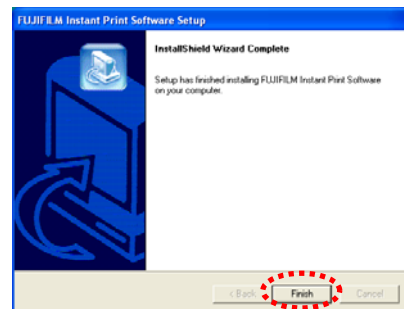


4. After installation complete,
Click "Close" button.

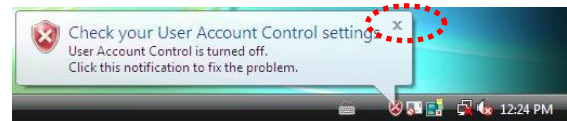
Then you can execute this tool from "Printer Color
Correction Tool" button of SF-PM main window.



5. When the installation properly ended, window
shown at right will appear.
Click the [Finish] button.



6. When the pop-up window is displayed, click "X" to
delete the window.



The installation of SF-PM is completed by this.
Remove the SF-PM installation CD from the CD-drive of the PC.

3-4 Setting the printer ID manually

In situations such as a change to the number of connected printers, you must manually launch "Printer ID Setup" and set the printer IDs again. The procedure shown below is required.

1. Display [Programs] menu.

[In case of Windows 2000 Professional]

- ◆ Click [Start] button and select [Programs].

[In case of Windows XP]

- ◆ Click [Start] button and select [Programs].

[In case of Windows Vista]

- ◆ Click [Start] button and select [Programs].

2. Select "ASK Printer ID Setup" in the "Instant Print Software" program folder.

3. The IDs for connected printers are set automatically. Wait a few moments until setting is completed.

- When the "Printer ID Setup" window opens, ID numbers between 1 and 6 are automatically assigned in sequence to the connected printers.
- Automatic printer ID setting takes between 10 and 90 seconds depending on the number of printers connected.

4. When automatic ID setting ends, the results are displayed in the "Printer ID Setup" window.

5. Normally, there is no need to change these settings. Click the [Exit] button.

[NOTE]

- ◆ When this window is displayed, make a note of the serial numbers and ID numbers of the respective printers. This will serve as a guide as to which printers the IDs selected in the "Printer ID Setup" window are assigned to.
- ◆ The automatically assigned ID numbers can be changed manually. To do this, change the printer ID on the screen to a number between 0 and 7 and then click the [Change] button.
- ◆ If you change the ID manually, take care not to assign duplicate ID numbers to multiple printers.
- ◆ [Change] button saves the printer ID settings. However, note that relaunching "ASK Printer ID Setup" from the program menu automatically sets the IDs again.

4. How to use Print Condition Setup

It is necessary to use "Print Condition Setup" for the proper work of "Print Manager".

4-1 How to start Print Condition Setup

[NOTE]

- Combination of Print Condition Setup and Print Manager described below cannot be started at the same time.
Print Condition Setup ⇔ Printer ID Setup
- If "Printer ID Setup" is running when you use "Print Condition Setup", click the [Exit] or [Change] button to exit "Printer ID Setup".
- In case that the associated Print Manager is printing, the setting change in Print Condition Setup is possible. However, after the print ends, the setting is reflected.

Follow the steps described below to start the Print Condition Setup.

There are two kinds of start methods.

1. Display [Programs] menu.

[In case of Windows 2000 Professional]

- ◆ Click [Start] button and select [Programs].

[In case of Windows XP]

- ◆ Click [Start] button and select [All Programs].

[In case of Windows Vista]

- ◆ Click [Start] button and select [All Programs].

2. Print Condition Setup will start, and the window shown below will appear.

Please confirm "5-1 How to start Print Manager".

[Print Condition Setup]

SF-PM Ver.6.0 ASK Print Condition Setup

1 2

☒ Print folder settings1

Print: C:\Program Files\ASK Print Module\SF-PM_ASK_4x6 Reference

Printer ID: ☐ 0 ☒ 1 ☐ 2 ☐ 3 ☐ 4 ☐ 5 ☐ 6 ☐ 7 ☐ FINE MODE

Print size: 4"x6" Size(102mm x 152mm) ☐ Auto resize

☐ Print folder settings2

Print: Reference

Printer ID: ☐ 0 ☐ 1 ☐ 2 ☐ 3 ☐ 4 ☐ 5 ☐ 6 ☐ 7 ☐ Auto resize

Print size: 3.5"x5" Size(89mm x 127mm)

☐ Print folder settings3

Print: Reference

Printer ID: ☐ 0 ☐ 1 ☐ 2 ☐ 3 ☐ 4 ☐ 5 ☐ 6 ☐ 7 ☐ Auto resize

Print size: 3.5"x5" Size(89mm x 127mm)

☐ Print folder settings4

Print: Reference

Printer ID: ☐ 0 ☐ 1 ☐ 2 ☐ 3 ☐ 4 ☐ 5 ☐ 6 ☐ 7 ☐ Auto resize

Print size: 3.5"x5" Size(89mm x 127mm)

☐ Print folder settings5

Print: Reference

Printer ID: ☐ 0 ☐ 1 ☐ 2 ☐ 3 ☐ 4 ☐ 5 ☐ 6 ☐ 7 ☐ Auto resize

Print size: 3.5"x5" Size(89mm x 127mm)

☐ Image Process Please select this checkbox when printing directly from the printer. Please deselect this checkbox in this other cases.

OK Cancel

4-2 How to use Print Condition Setup

How to use Print Condition Setup for the proper work of Print Manager is as follows.

4-2-1 About Print Folder

It is necessary to know about the concept of "Print Folder" to use Print Condition Setup.

Print Manager is monitoring the specified folders. And when the image files are detected in these folders, Print Manager will print those image files. This specified folder is called the "Print Folder".

- * Each Print Condition Setup can handle 10 Print Folders at max.
- * Print Condition Setup can configure the settings for each and every Print Folder.

The details of items to be configured and the methods of setting these items are described below.

SF-PM needs to be cooperated with image-creating-applications. Therefore, "Print Folders" must be the folders where the image-creating-applications save their image files.

[NOTE]

- Image formats (and their file extensions) which SF-PM supports are described below.
JFIF(.JPG), TIFF(.TIF), Exif JPEG(.JPG), Exif TIFF(.TIF), 24bit-Windows Bitmap(.BMP)
- If the image file in the Print Folder is needed to be saved, be careful about that the image file will be deleted from the Print Folder after the printing of that image is completed.

4-2-2 Details of items to be configured and the methods of setting these items

1. Configure the items for Print Folder as described in the table below.

Items	Details and methods to configure				
"1", "2" tab	The print folders can be set up to ten in the print condition setting. To display the print folder from 1 to 5, "1" tab is clicked. To display the print folder from 6 to 10, "2" tab is clicked. <Note> In the combination with SF-MP400, the print folder of 6-10 cannot be used.				
[Print folder Settings] check box	<Details> Indicates whether the specified folder is active as a Print Folder or not. <table><tr><td>Ticked</td><td>Active as a Print Folder</td></tr><tr><td>Not ticked</td><td>Inactive</td></tr></table> <Method to configure> Click the check box.	Ticked	Active as a Print Folder	Not ticked	Inactive
Ticked	Active as a Print Folder				
Not ticked	Inactive				

Items	Details and methods to configure									
[Print Folder] field	<div><Details> Indicates the location of the Print Folders.</div> <div><Method to configure> "SF-PM_ASK_3.5x5", "SF-PM_ASK_4x6", "SF-PM_ASK_5x7", "SF-PM_ASK_6x8", "SF-PM_ASK_6x9", "SF-PM_ASK_9x12", "SF-PM_ASK_8x10" and "SF-PM_ASK_8x12" folders is newly created, and They are set automatically as shown in the table below. After the update from the previous version, it becomes similar setting. * Please set the print folder according to that manual setting when there is software connected with the print module.</div> <table><tr><th>printer</th><th>printer paper size</th><th>folder</th></tr><tr><td>ASK-1500 ASK-2000 ASK-2500</td><td>3.5"x5"Size(89mm x 127mm) 5"x7"Size(127mm x 178mm) 4"x6"Size(102mm x 152mm) 6"x8"Size(152mm x 203mm) 6"x9"Size(152mm x 229mm)</td><td>SF-PM_ASK_4x6</td></tr><tr><td>ASK-4000</td><td>8"x10"Size(203mm x 254mm) 8"x12"Size(203mm x 305mm)</td><td>SF-PM_ASK_8x10</td></tr></table> <div>For changing the location if necessary, follow the instruction below. 1. Click the [Reference] button. 2. Dialog box for selecting folder will appear. Select a proper folder, then click [OK] button. 3. The location of that folder will be shown. * The location can also be input directly in [Print Folder] field.</div> <div>[NOTE] A folder in the PC cannot be redundantly specified as Print Folder.</div>	printer	printer paper size	folder	ASK-1500 ASK-2000 ASK-2500	3.5"x5"Size(89mm x 127mm) 5"x7"Size(127mm x 178mm) 4"x6"Size(102mm x 152mm) 6"x8"Size(152mm x 203mm) 6"x9"Size(152mm x 229mm)	SF-PM_ASK_4x6	ASK-4000	8"x10"Size(203mm x 254mm) 8"x12"Size(203mm x 305mm)	SF-PM_ASK_8x10
printer	printer paper size	folder								
ASK-1500 ASK-2000 ASK-2500	3.5"x5"Size(89mm x 127mm) 5"x7"Size(127mm x 178mm) 4"x6"Size(102mm x 152mm) 6"x8"Size(152mm x 203mm) 6"x9"Size(152mm x 229mm)	SF-PM_ASK_4x6								
ASK-4000	8"x10"Size(203mm x 254mm) 8"x12"Size(203mm x 305mm)	SF-PM_ASK_8x10								
[Printer ID] field	<div><Details> Shows the ID of the printer that will be used to print the images in the specified print folder.</div> <table><tr><td>No. of printers</td><td>ASK-1500 ASK-2000 ASK-2500 ASK-4000</td><td>6 printers at max. (Up to 3 printers with the same paper size can be connected.)</td></tr></table> <div><Method to configure> Use the checkboxes to select the connected printer IDs.</div> <div><Note><ul style="list-style-type: none">You can connect multiple printers and allocate printer paper sizes to multiple print folders.At shipment, the printer ID number is set to the default of "ID:0". When you first launch Printer ID Setup, take care not to set duplicate ID numbers for connected printers.The print quality varies for the different printer models (ASK-1500, ASK-2000, ASK-2500 or ASK-4000).Note that successful operation is not guaranteed when "ASK-1500" and "ASK-2000" and "ASK-2500" printers are connected and used at the same time.</div>	No. of printers	ASK-1500 ASK-2000 ASK-2500 ASK-4000	6 printers at max. (Up to 3 printers with the same paper size can be connected.)						
No. of printers	ASK-1500 ASK-2000 ASK-2500 ASK-4000	6 printers at max. (Up to 3 printers with the same paper size can be connected.)								

Items	Details and methods to configure														
[Print size] field	<p><Details> Indicates the paper size to be printed. Available paper sizes depend on the printer model.</p> <table border="1"> <tr> <td>ASK-1500</td><td>3.5"x5"Size(89mm x 127mm)</td></tr> <tr> <td>ASK-2000</td><td>5"x7"Size(127mm x 178mm)</td></tr> <tr> <td>ASK-2500</td><td>4"x6"Size(102mm x 152mm)</td></tr> <tr> <td></td><td>6"x8"Size(152mm x 203mm)</td></tr> <tr> <td></td><td>6"x9"Size(152mm x 229mm)</td></tr> <tr> <td>ASK-4000</td><td>8"x10"Size(203mm x 254mm)</td></tr> <tr> <td></td><td>8"x12"Size(203mm x 305mm)</td></tr> </table> <p><Method to configure> Select the paper size from the combo box.</p> <p><Note> ● Images will be printed on the center of the paper.</p>	ASK-1500	3.5"x5"Size(89mm x 127mm)	ASK-2000	5"x7"Size(127mm x 178mm)	ASK-2500	4"x6"Size(102mm x 152mm)		6"x8"Size(152mm x 203mm)		6"x9"Size(152mm x 229mm)	ASK-4000	8"x10"Size(203mm x 254mm)		8"x12"Size(203mm x 305mm)
ASK-1500	3.5"x5"Size(89mm x 127mm)														
ASK-2000	5"x7"Size(127mm x 178mm)														
ASK-2500	4"x6"Size(102mm x 152mm)														
	6"x8"Size(152mm x 203mm)														
	6"x9"Size(152mm x 229mm)														
ASK-4000	8"x10"Size(203mm x 254mm)														
	8"x12"Size(203mm x 305mm)														
[FINE MODE] check box	<p><Details> The high-resolution or more can be printed by making "FINE MODE" effective.</p> <table border="1"> <tr> <td>Ticked</td><td>Active</td></tr> <tr> <td>Not ticked</td><td>Inactive</td></tr> </table> <p><Method to configure> Click the check box.</p> <p><Note> ● Only when only ASK-2500 has been selected by "Printer ID field", a set item is displayed. When the combination with models other than ASK-2500 excluding ASK-2500 is selected, a set item is not displayed. ● When 2L/2K/A5 size are specified by the print size, it is printed without fail by "FINE MODE".</p>	Ticked	Active	Not ticked	Inactive										
Ticked	Active														
Not ticked	Inactive														

Items	Details and methods to configure				
[Auto resize] check box	<p><Details> Indicates whether the Auto Resize (automatically resizes the images to the suitable size for the selected [Print Size]) is active or not.</p> <table border="1"> <tr> <td>Ticked</td><td>Active</td></tr> <tr> <td>Not ticked</td><td>Inactive</td></tr> </table> <p><Method to configure> Click the check box.</p> <p><Note></p> <ul style="list-style-type: none"> ● When [Auto resize] is active, Print Manager will print the images in entire printable area. (Therefore, some images may be cropped.) ● When [Auto resize] is inactive, Print Manager will print the images in their original size without resizing, and the images will be printed on the center of the paper. 	Ticked	Active	Not ticked	Inactive
Ticked	Active				
Not ticked	Inactive				
[Image processing] check box	<p><Details> Indicates whether or not the automatic quality adjustment function is enabled.</p> <table border="1"> <tr> <td>Ticked</td><td>Active</td></tr> <tr> <td>Not ticked</td><td>Inactive</td></tr> </table> <p><Method to configure> Click the check box.</p> <p><Note> To print using another application (such as SF-MP400) in conjunction with SF-PM, untick the checkbox to disable the adjustment function.</p>	Ticked	Active	Not ticked	Inactive
Ticked	Active				
Not ticked	Inactive				

2. Repeat the steps described above from [Print Folder Settings 2] to [Print Folder Settings 10].

<p>[NOTE]</p> <p>Do not activate Print Folders more than needed. Untick the [Print Folder Settings] check box for the unnecessary Print Folder.</p>
--

4-3 How to save settings and exit

To save settings and quit the Print Condition Setup, follow the steps described below.

1. Click [Save] button to save settings and quit Print Condition Setup. When settings are properly saved, the Print Condition Setup will be closed.
When [Exit] button is clicked, Print Condition Setup will just be closed and settings will not be saved.
(Since no warning message about discarding the settings will be shown, be careful to click [Exit] button.)

Now, Print Manager is configured and is ready to use.

* Be sure to start Print Manager with the steps described in "5-1 How to start Print Manager".

5. How to use Print Manager

Follow the steps described below to start Print Manager, and to see how the main window works.

5-1 How to start Print Manager

- Print Manager starts with the booting of the PC.
Since Print Manager usually runs in the task tray, main windows of Print Manager is not shown on screen.
- Generally, Print Manager should stay in the task tray.
- In case that the associated Print Condition Setup is running, the setting change of Print Condition Setup cannot be reflected while printing by Print Manager though the start of Print Manager and the setting change of Print Manager are possible.
When the print ends in Print Manager, the setting change in Print Condition Setup is reflected.
- If "Printer ID Setup" is running when you use "Print Manager", firstly exit "Printer ID Setup".
- When Print Manager was quitted for some reason (ex. to start Print Condition Setup, etc.), re-start Print Manager with the steps described below.
- Load paper for the specified print size into the printer and then launch "Print Manager".
- If the printer with the ID number selected in "Print Condition Setup" is not connected, the "Printer not ready" error message appears when Print Manager starts up.
Connect the printer with the specified ID number and then launch "Print Manager".

1. Display [Programs] menu.

[In case of Windows 2000 Professional]
◆ Click [Start] button and select [Programs].
[In case of Windows XP]
◆ Click [Start] button and select [All Programs].
[In case of Windows Vista]
◆ Click [Start] button and select [All Programs].

2. Select "FUJIFILM Instant Print Software" program folder, and select "ASK Print Manager" icon which is to be started.

3. Print Manager will start.

When initialize process ends, main window of Print Manager will disappeared from the screen and stored in task tray. Now Print Manager is ready.

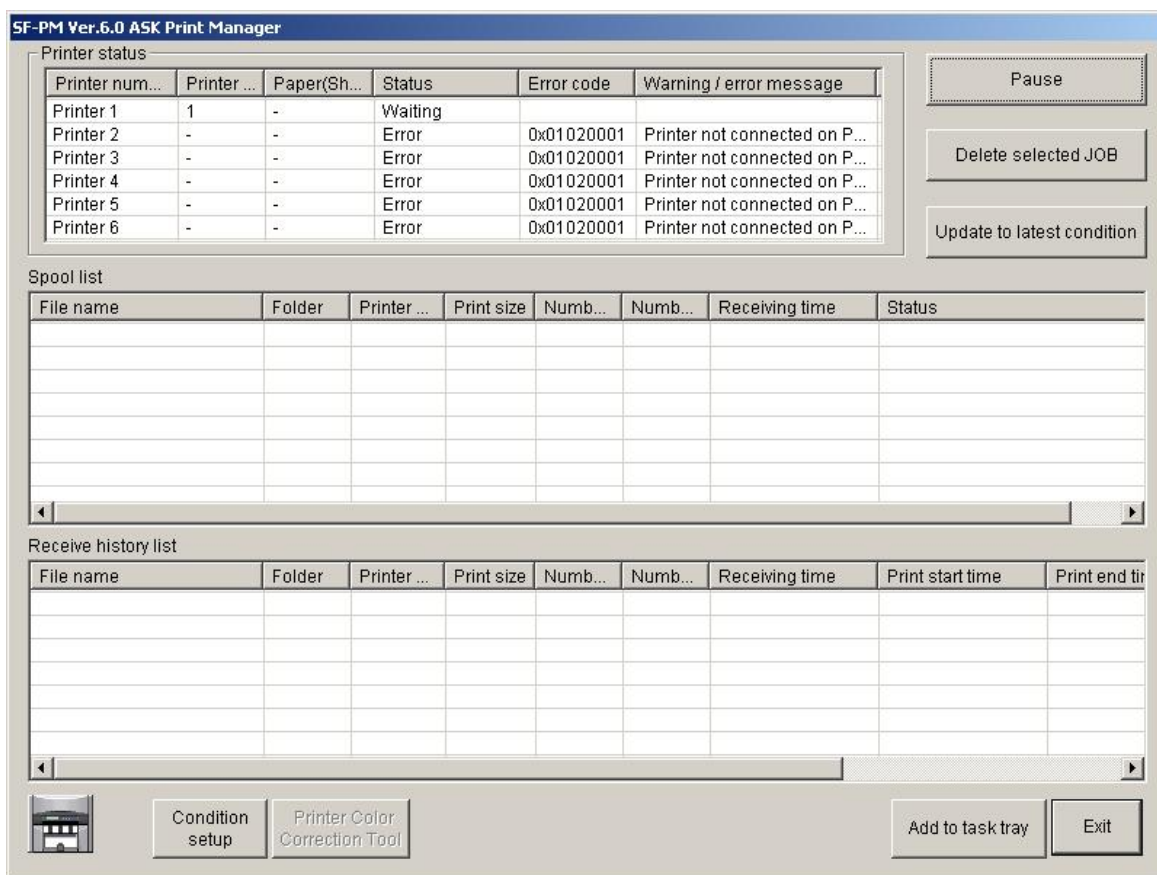
5-2 How to use the main window of Print Manager

- Generally, Print Manager is running in the task tray and the main window of Print Manager is not shown on screen.
- In some cases (such as checking the result of printing, pausing the printing, or checking errors), the main window of Print Manager is needed to be shown on screen. To show the main window of Print Manager, follow the steps described below.


1. Double click the Print Manager icon () in the task tray.

If task tray cannot be accessed for some reasons (ex. some windows of other applications are displayed on top of the screen and task bar is hidden), press Ctrl + Esc key. Task bar will appear and task tray can be accessed.

2. The main window of Print Manager will be shown as described below.



The meanings and functions of the screen components are explained below.

Name of Print Manager	Icon	Printer identification	Printer Color Correction button	Rows of "Printer Status" table
ASK Print Manager		Printer ID	Available *1	6

*1 This button is displayed only if "Printer Color Correction Tool" is installed.

[Printer status : list of printer's current status]

Items	Printer number, Printer ID, Paper(Sheets), Status, Error code, Warning/error messages								
Remarks	<ul style="list-style-type: none"> Paper(Sheets) shows the approximate number of remaining sheets of printer paper. (Displayed as "-" if the amount is unknown.) "Status" indicates printer's current status and there are 5 statuses as described below. <table border="1"> <tr><td>Waiting</td><td>ready to print</td></tr> <tr><td>Printing</td><td>now printing</td></tr> <tr><td>Error</td><td>an error is detected (printing is not available)</td></tr> <tr><td>Out of paper</td><td>paper ran out (printing is not available)</td></tr> </table> "Error code" indicates code number of detected error. "Warning/error message" indicates what kind of warning/error is detected. 	Waiting	ready to print	Printing	now printing	Error	an error is detected (printing is not available)	Out of paper	paper ran out (printing is not available)
Waiting	ready to print								
Printing	now printing								
Error	an error is detected (printing is not available)								
Out of paper	paper ran out (printing is not available)								

[Spool list : information list of image files in the Print Folders]

Items	File name, Folder, Printer name, Print size, Number of sheets ordered, Number of sheets printed, Receiving time, Status						
Remarks	<ul style="list-style-type: none"> "Status" indicates current status of image files and there are 3 statuses as described below. <table border="1"> <tr><td>Waiting</td><td>ready to be printed</td></tr> <tr><td>Printing</td><td>now being printed</td></tr> <tr><td>Error</td><td>an error is detected in printing process</td></tr> </table> When an error detected, error code and kind of error are also shown in "Status" field. 	Waiting	ready to be printed	Printing	now being printed	Error	an error is detected in printing process
Waiting	ready to be printed						
Printing	now being printed						
Error	an error is detected in printing process						

[Receive history list : information list of ordered image files]

Items	File name, Folder, Printer name, Print size, Number of sheets ordered, Number of sheets printed, Receiving time, Print start time, Print end time, Status						
Remarks	<ul style="list-style-type: none"> "Status" indicates results of printing image files and there are 3 statuses as described below. <table border="1"> <tr><td>Print completion</td><td>already printed properly</td></tr> <tr><td>Deleted</td><td>image file was manually deleted for some reasons</td></tr> <tr><td>Error</td><td>Error code and message of the detected error. "Deleted" message will be added when the error-detected file was deleted.</td></tr> </table> History will be saved for 10 days. 	Print completion	already printed properly	Deleted	image file was manually deleted for some reasons	Error	Error code and message of the detected error. "Deleted" message will be added when the error-detected file was deleted.
Print completion	already printed properly						
Deleted	image file was manually deleted for some reasons						
Error	Error code and message of the detected error. "Deleted" message will be added when the error-detected file was deleted.						

[Functions of buttons]

Name	Function
Pause (Print restart)	<p>Pauses printing files listed in "Spool list".</p> <ul style="list-style-type: none"> ● When this button is clicked while a image is being printed, pausing will be in effect after the printing is completed. ● The label of this button will turn into "Print restart" while pausing is in effect. And when the " Print restart " button is clicked, printing will be restarted, and the label of this button will turn back into "Pause".
Delete selected JOB	<p>Deletes the image file which is selected in "Spool list".</p> <ul style="list-style-type: none"> ● Deleted image file will not be printed. ● The image file in printing process can not be deleted. <p>Multiple image files can be selected.</p> <p>With Shift key: A string of image files can be selected by clicking on the first one in the string and the last one while holding the Shift key down. Clicking the [Delete selected JOB] button deletes the selected files.</p> <p>With Ctrl key: Multiple individual image files can be selected by clicking on one file and other ones while holding the Ctrl key down. Clicking the [Delete selected JOB] button deletes the selected files.</p>
Update to latest condition	<p>Refreshes "Spool list".</p> <ul style="list-style-type: none"> ● "Spool list" will be refreshed at every interval time. However, "Spool list" can be refreshed manually by clicking this button.
Add to task tray	<p>Minimizes the main windows of Print Manager and put it into task tray.</p> <ul style="list-style-type: none"> ● It is recommended to click this button when the operation on the main window of Print Manager is finished.
Exit	<p>Quits Print Manager.</p> <ul style="list-style-type: none"> ● When this button is clicked while a image is being printed, Print Manager will be closed after the printing completed.
Printer Color Correction Tool	<p>Clicking this button launches the application used for printer color correction. For details, refer to the Printer Color Correction Tool User's Guide.</p> <ul style="list-style-type: none"> ● This button is displayed only if "Printer Color Correction Tool" is installed.
Print Condition Setup	<p>Print Condition Setup is started when clicking. Please confirm "4-2 How to use Print Condition Setup" to the setting method by Print Condition Setup.</p>

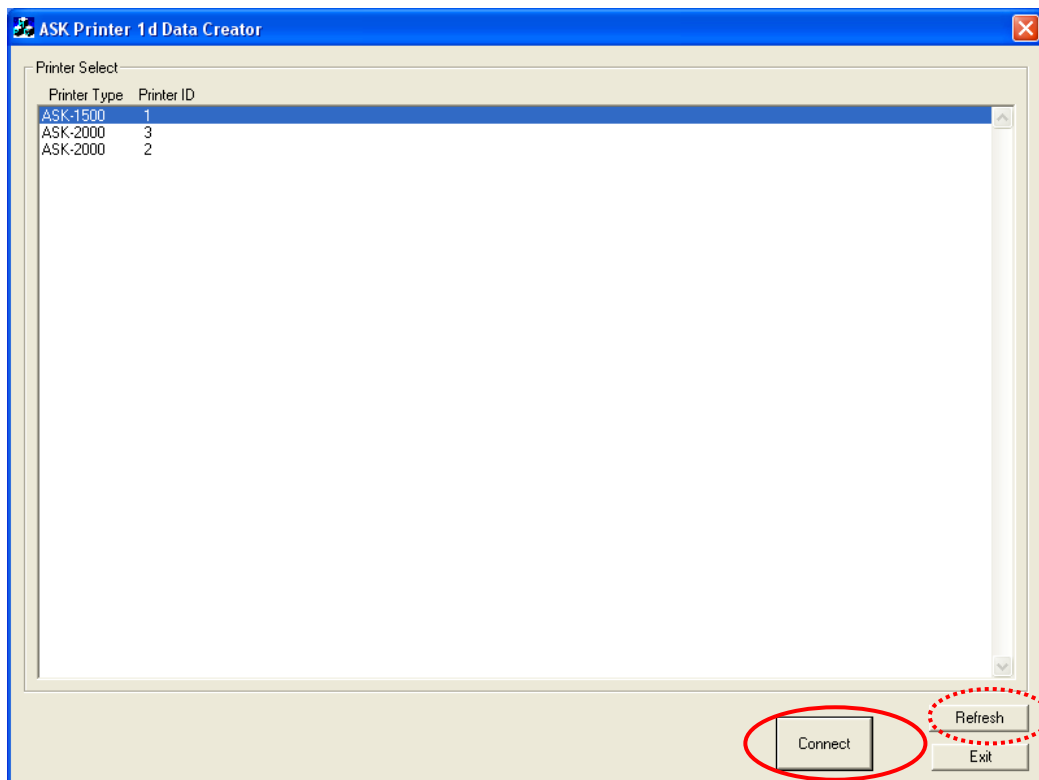
5-3 How to use Color Correction Tool

5-3-1 Select target printer

When you execute Color Correction Tool (ask1D-Creator), below window will appear.

Select the target printer from connected printers' list.

Click "Connect" button.



If the target printer doesn't show up, check the printer power and USB cable connection then click "Refresh" button.

5-3-2 Test Print function

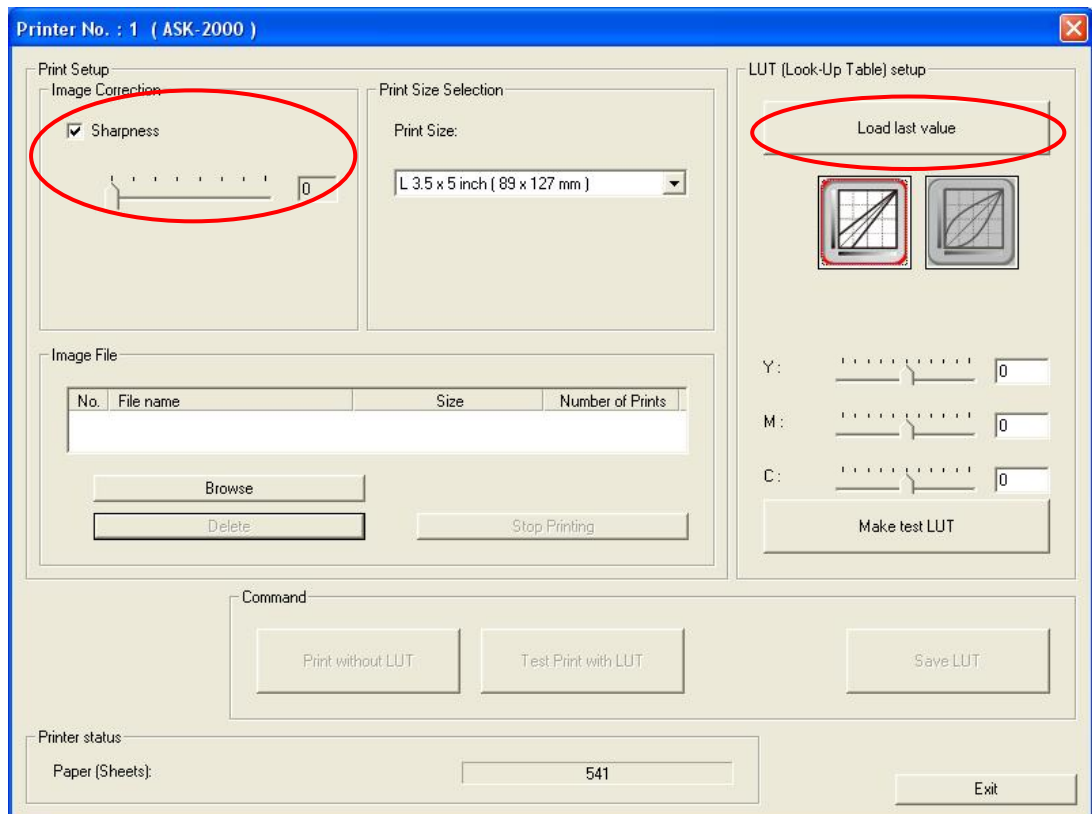
After selects printer, below window will appear.

a) Sharpness setting

Sharpness can be set valuable. Normally use "0". (Default sharpness value is "0".)

b) Load last value

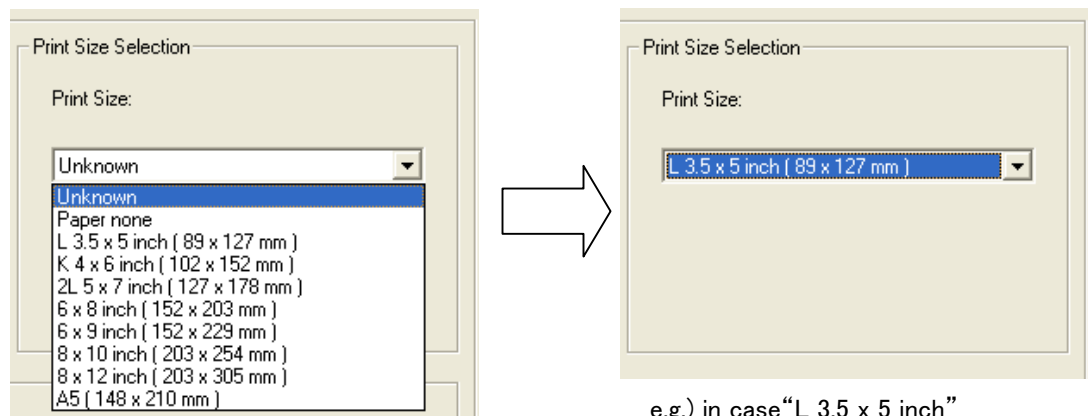
Click "Load last value" button, it can be loaded the last time YMC color correction value.



c) Select print size.

Check the paper and ribbon size in the thermal photo printer.

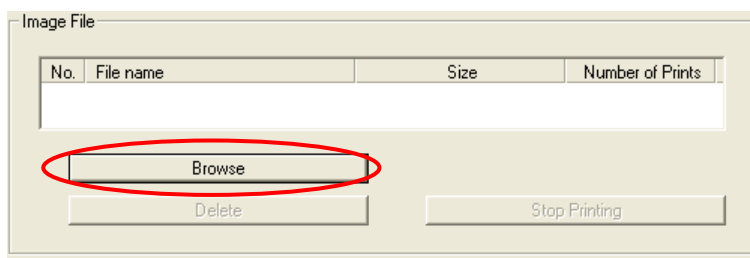
Select the print size from the list.



e.g.) in case "L 3.5 x 5 inch"

d) Load Image file

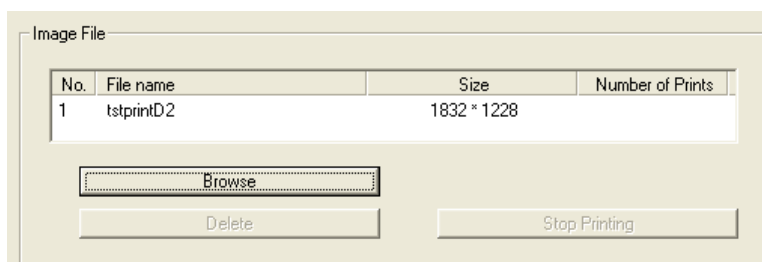
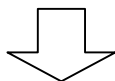
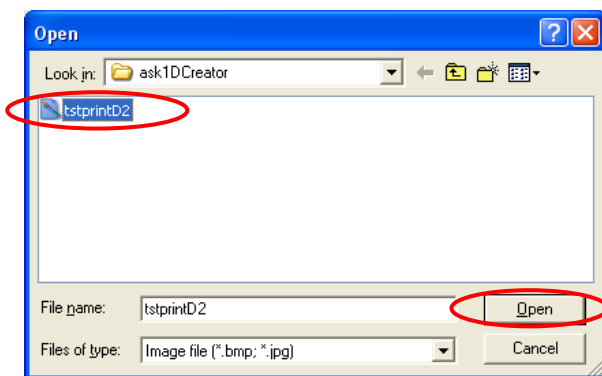
Click "Browse" button for searching image file.



Browse and select the test image file (tstprintD2.bmp) in same folder of this tool.

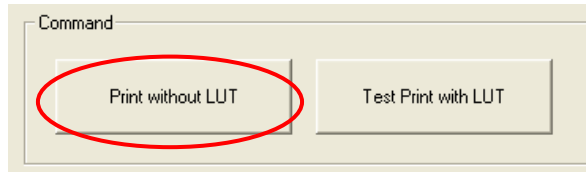
(Tool path is c:\Program Files\FUJIFILM\ask1DCreator.)

Click "Open" button.

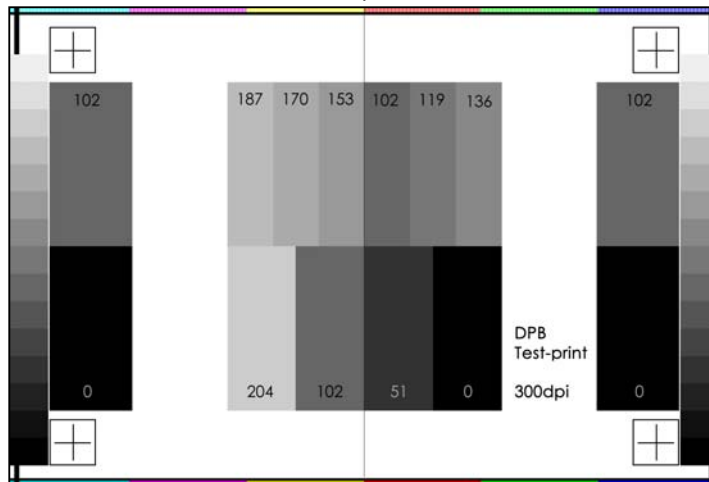
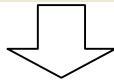
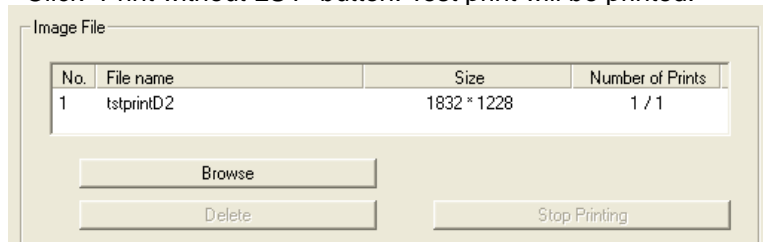


e) Print without LUT

“Print without LUT” button is for printing without using LUT.

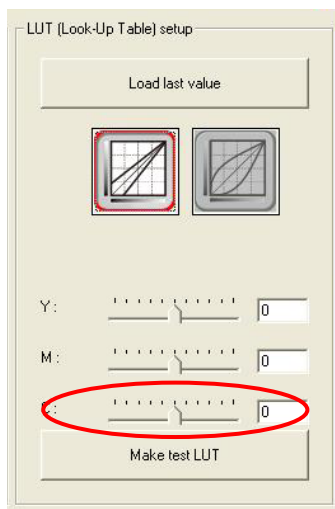



Click “Print without LUT” button. Test print will be printed.



f) Make test LUT (Look-Up Table)

Select LUT button.



 : Basic mode

Liner LUT enhance

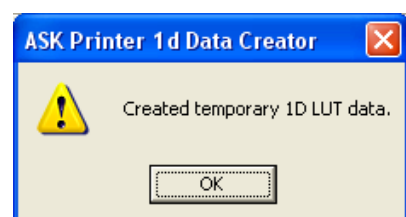
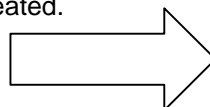


: Advanced mode

Gamma Curve LUT enhance

Adjust the color value (Y, M, and C) according to the color of print without LUT.

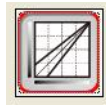
Click “Make test LUT” button. Then LUT for test will be created.



It has two modes for adjusting LUT.

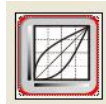
Try out 'Basic mode' first. If good result is unavailable, try out 'Advanced mode'.

a) Basic mode (Liner LUT enhance)



Adjust each color density with liner enhance (as keeping gradation curve).
Amount of change is gradually increased towards the high density.

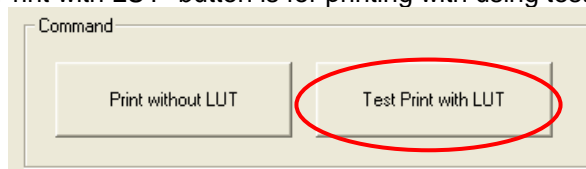
b) Advanced mode (Gamma Curve LUT enhance)



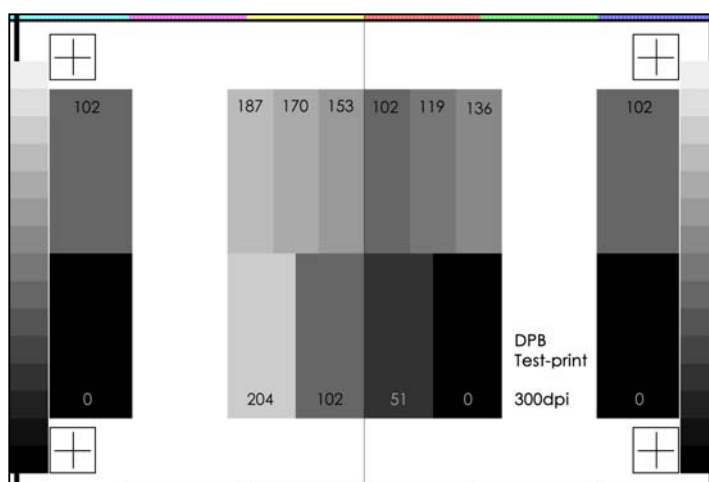
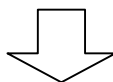
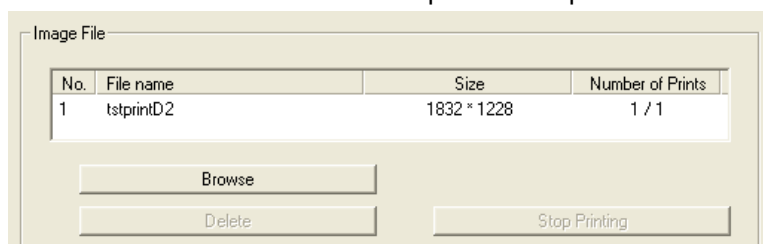
Adjust each color density with middle & high range enhance.
This enhance method is focus on middle range.
Amount of change in middle range is bigger than high range.

g) Print test

"Test Print with LUT" button is for printing with using test LUT.



Click "Print with LUT" button. Test print will be printed.

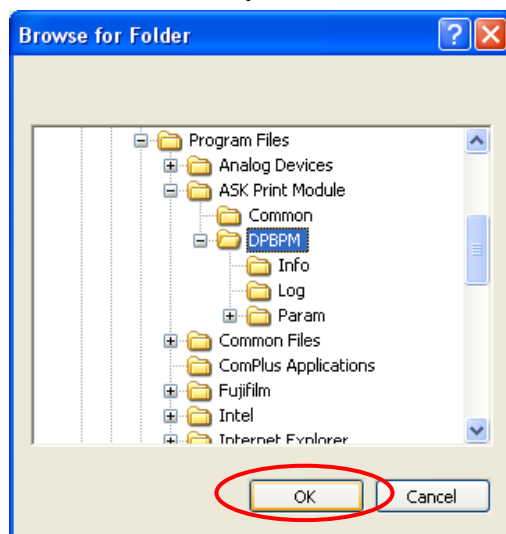
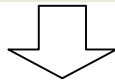
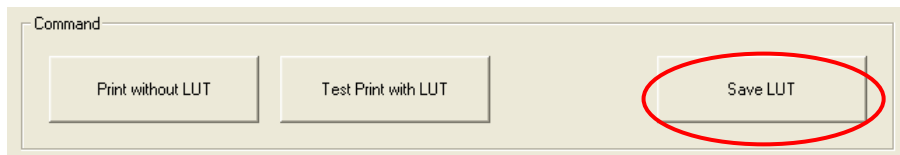


When the print needs the color correction, adjust the color value and test again.

It should be good gray balance at the test chart print.

5-3-3 Save LUT

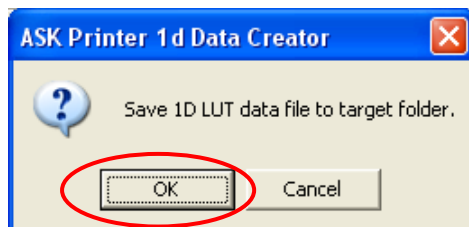
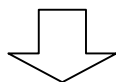
After fixed color correction, click “Save LUT” button.



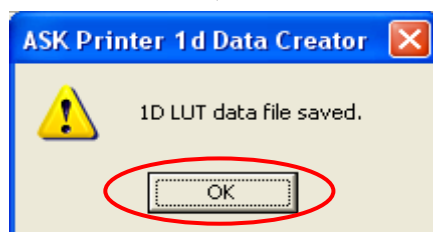
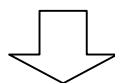
It will appear the window of “Browse for Folder”.

Select the folder for SF-PM, the path is
“c:¥Program files¥ASK Print
Module¥DPBPM”.

Click “OK” button.



Click “OK” button.



Click “OK” button.

Close this tool. Click “Exit” button.

5-3-4 Through test

After color correction, make sure the color of print by printing through the SF-PM and the thermal photo print application.

5-4 When an error is detected on the printers

When an error is detected on printers, the main window of Printer Manager will appear on the screen, and the printing process will be paused. Follow the steps described below to re-start printing.

1. Refer to the "Printer status" list etc. to see the types of detected errors.
2. Solve the problem which was detected on the printer.
3. Then, click [Print restart] button. Printing will be restarted.
4. Click [Add to task tray] button to minimize the window to the task tray.

6. How to uninstall SF-PM

To uninstall SF-PM, follow the steps described below.

1. If "Print Manager", "Print Condition Setup" or "Printer ID Setup" is running, quit the program before uninstalling SF-PM.
(For information on how to quit the programs, see "4-1 How to start Print Condition Setup" or "4-3 How to save settings and exit".)

2. Go to "Control Panel".

[In case of Windows 2000 Professional]

- ◆ Click [Start] button and select [Settings] - [Control Panel].

[In case of Windows XP]

- ◆ Click [Start] button and select [Control Panel].

[In case of Windows Vista]

- ◆ Click [Start] button and select [Control Panel].

3. Show windows for uninstalling programs.

[In case of Windows 2000 Professional]

- ◆ Double click "Add/Remove Programs" icon.

[In case of Windows XP]

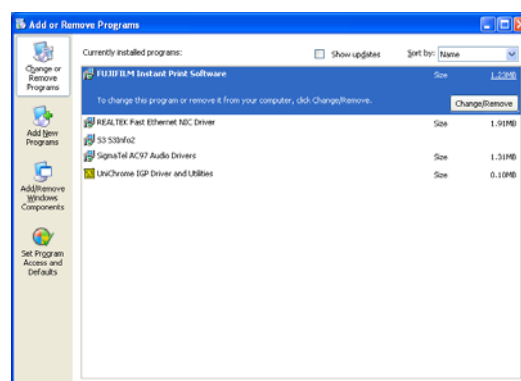
- ◆ Select [Add or Remove Programs].

[In case of Windows Vista]

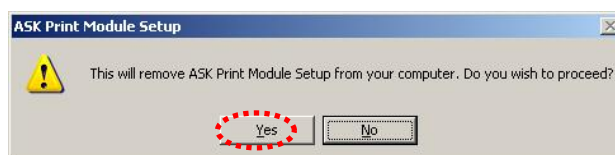
- ◆ Select [Add or Remove Programs].

4. Select "FUJIFILM Instant Print Software", and click "Change/Remove" button.

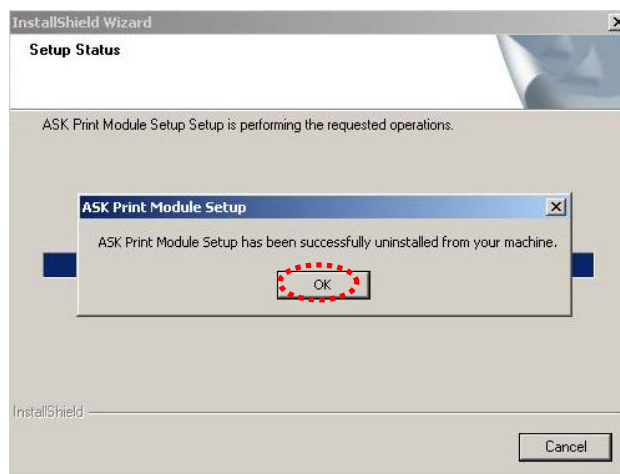
5. Window shown at right will appear.
Click [Remove] button and then click [Next] button.



6. A window similar to that shown below will open. Click the [Yes] button.
Uninstallation begins.



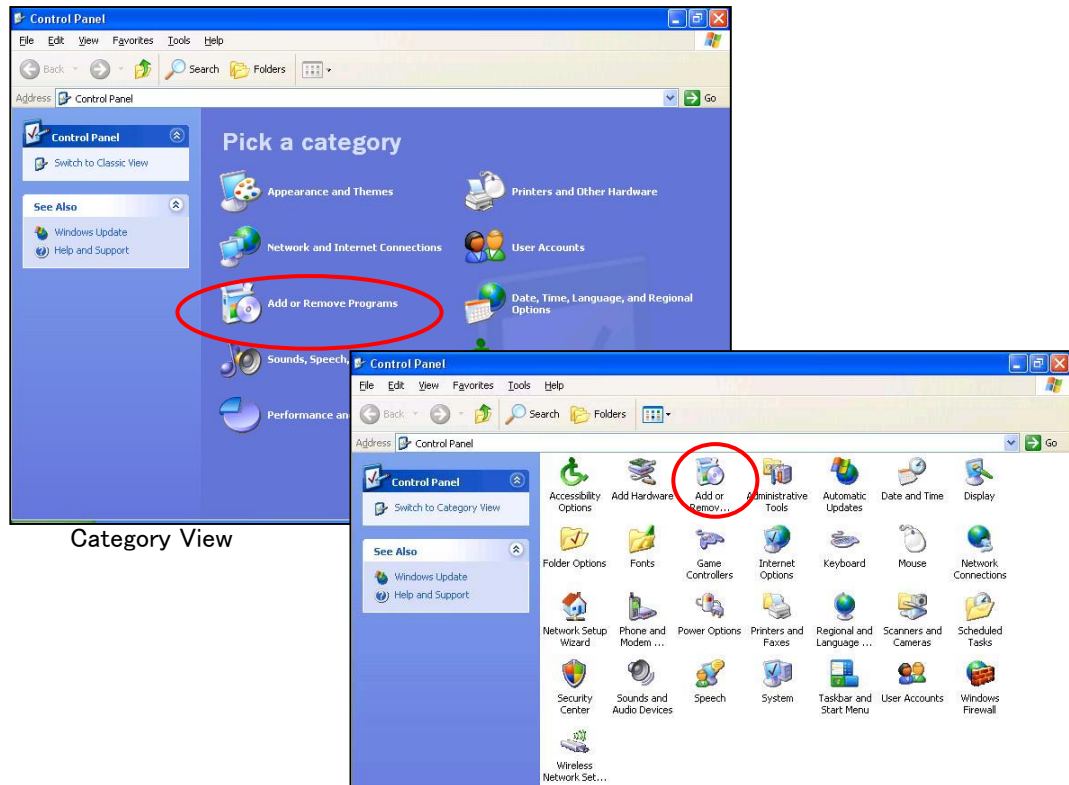
7. When Uninstallation is successfully completed, the window shown below appears.
Click the [OK] button.



7. How to UnInstall Color Correction Tool

You can simply remove this ask1DCreator through the Add/Remove Control Panel.

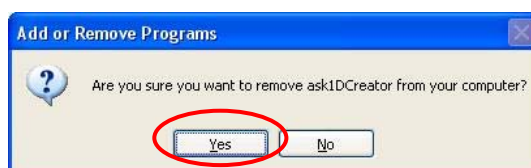
- a) Click "Start", and click "Control Panel".



- b) Double-click "Add or Remove Programs".
- c) Find the 'ask1DCreator' listed and click on it. It should look similar to the following. And click "Remove" button.



- d) Click "Yes" button.



- e) After this ask1Dcreator should be removed from your system.

8. Pixel size list for each print size

Pixel sizes for each print size are as listed below.

Printer model	Print size	Pixel size (Max. value)
ASK-1500	3.5"x5"Size(89mm x 127mm)	1536 x 1074
ASK-2000	5"x7"Size(127mm x 178mm)	1536 x 2130
ASK-2500	4"x6"Size(102mm x 152mm)	1832 x 1228
	6"x8"Size(152mm x 203mm)	1832 x 2432
	6"x9"Size(152mm x 229mm)	1832 x 2748
ASK-4000	8"x10"Size(203mm x 254mm)	2444 x 3044
	8"x12"Size(203mm x 305mm)	2444 x 3644

- Pixel sizes described above is the maximum value for each print size when "Auto resize" option is inactive.
For example, in the case of printing in 4"x6" size, images whose pixel size is under 1832 x 1228 pixel can be printed.
- An error will be detected when images are larger than maximum pixel size for the print size. The message about this error will be displayed in "Status" field of "Spool list".
 - * Be aware that even if this error has been detected, the main window of Print Manager will not be shown on screen.(Refer to "5-4 When an error is detected on the printers".)
- When "Auto resize" option is active, pixel size of the image is free. The image size will automatically be zoomed to suitable size for the selected print size.
- Refer to "4-2-2 Details of items to be configured and the methods of setting these items" for the details of "Auto resize" option and print size.